

RobyTech. VoIP phone

Auto Provisioning

(Model PY-65,PY-60,PL-18)

1.Backup the config of the ip phone.

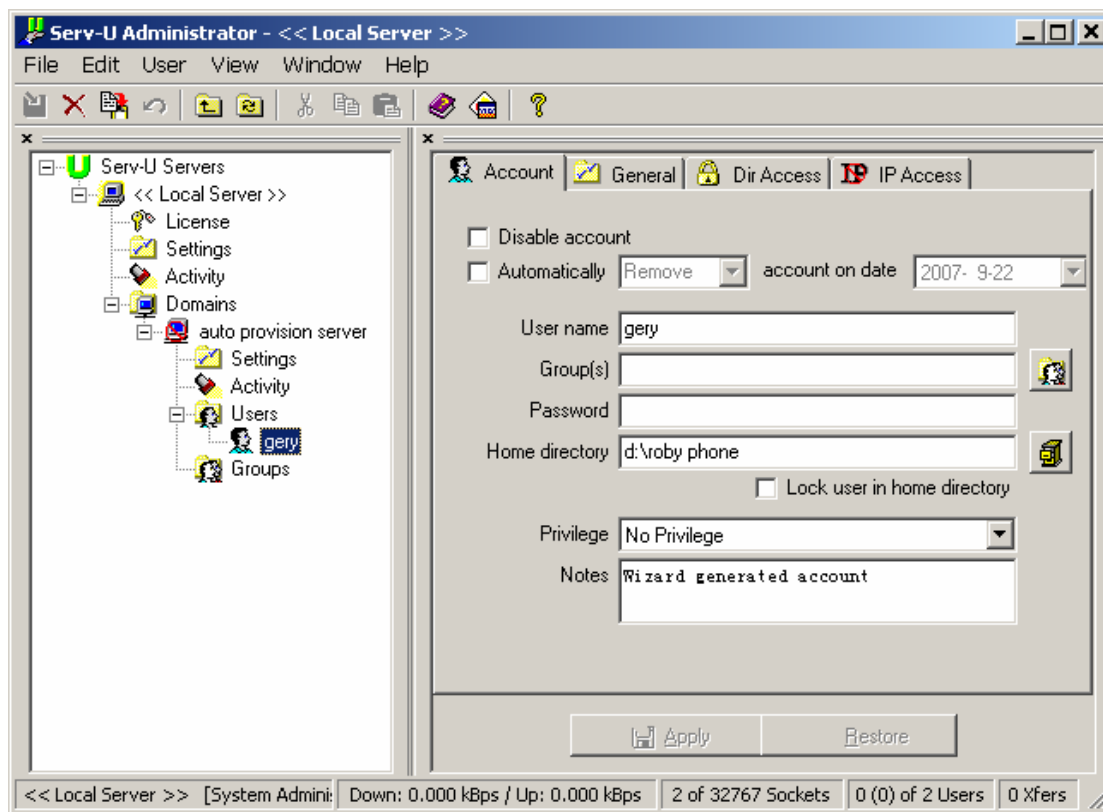
Open the settings of an ip phone,click left menu "Config Manage->Backup Config" , you can creat a config file by Notepad.

Current State
Network
VOIP
Advanced
Dial-peer
Config Manage
Update
System Manage

```
<<VOIP CONFIG FILE>>Version:2.0003
<GLOBAL CONFIG MODULE>
Static Ip           :192.168.1.179
Static NetMask      :255.255.255.0
Static GateWay      :192.168.1.1
Default Protocol    :2
Default Lifeline    :0
SIP use Lifeline    :0
Primary DNS         :202.96.134.133
Alter DNS           :202.96.128.68
DHCP Mode           :1
Domain Name         :
Host Name           :VOIP
Pppoe Mode          :0
HTL Start Port      :10000
HTL Port Number     :200
SNTP Time Zone      :56
SNTP Server         :207.46.130.100
Enable SNTP         :1
Enable Daylight     :0
SNTP Time Out       :60
Enable Gk And Proxy:1
Encrypt Key         :
Encode Signal       :0
Encode Rtp          :0
MMI Set             :1
<LAN CONFIG MODULE>
```

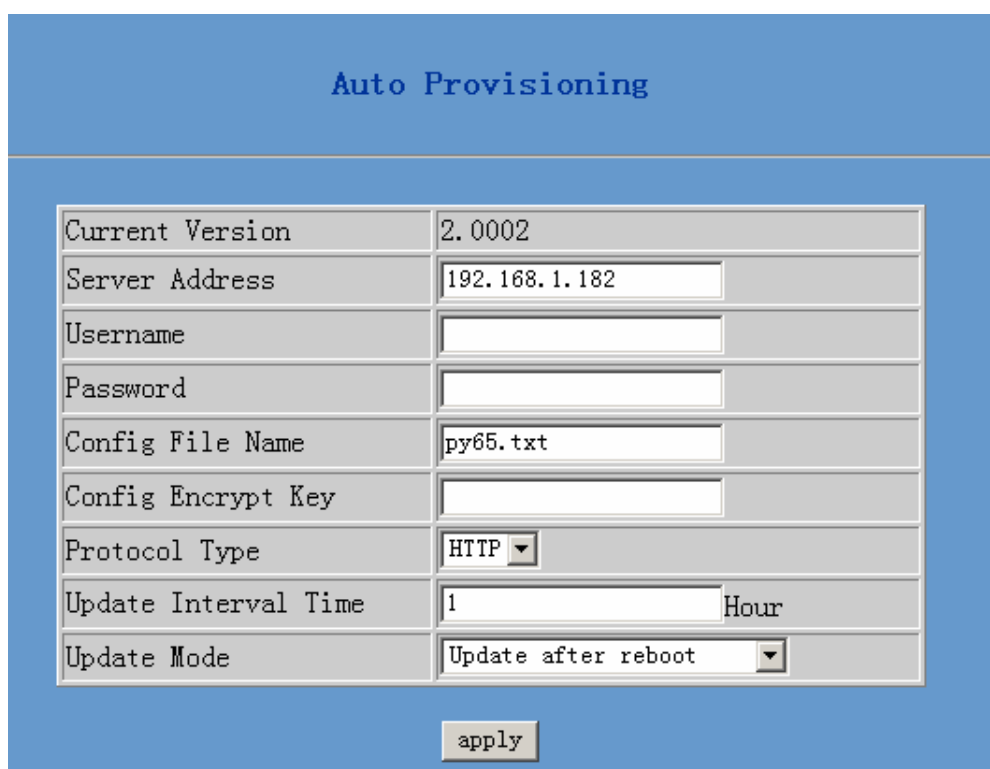
2.Put the config file into the server

RobyTech. VoIP phone supports HTTP and FTP auto provisioning,
Creat a HTTP or FTP server first and put a newer config file into the correct directory.

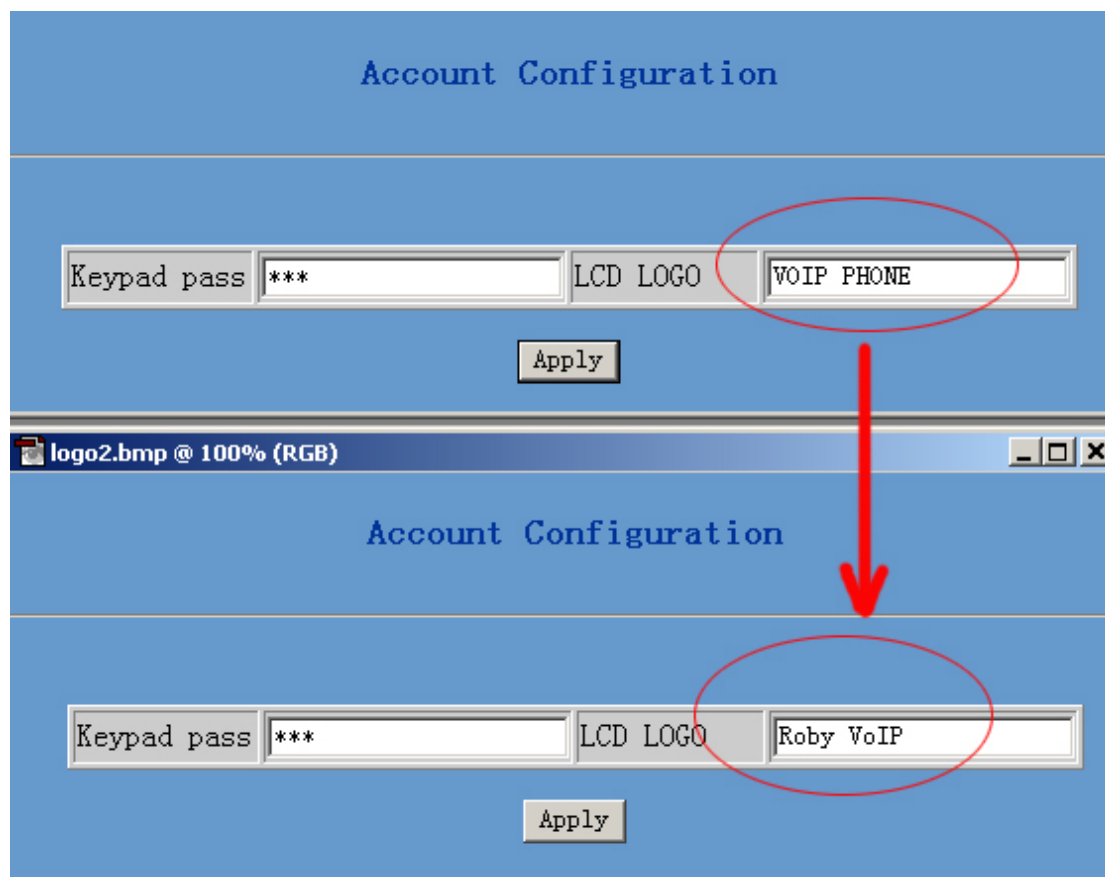


3. Config "Auto Provisioning" in an ip phone

Open the settings of an ip phone, click the left menu "Update--> Auto provisioning" , input the information,such as HTTP/FTP server address ,username(if any) , password(if any), config file name.



3. When the VoIP phone rebooting, the ip phone will logon the server and download the config file from the HTTP or FTP server. For example, the ip phone changed the logo via "auto provisioning".



*The version of the config file must be newer than the one existing in the ip phone, otherwise, the ip phone will not download it.

You can find the version at the first line at the config file.

Current State	<<VOIP CONFIG FILE>>Version:2.0003
Network	<GLOBAL CONFIG MODULE>
VOIP	Static Ip :192.168.1.179
Advanced	Static NetMask :255.255.255.0
Dial-peer	Static GateWay :192.168.1.1
Config Manage	Default Protocol :2
Update	Default Lifeline :0
System Manage	SIP use Lifeline :0
	Primary DNS :202.96.134.133
	Alter DNS :202.96.128.68
	DHCP Mode :1
	Domain Name :

Roby Technology Co., Limited

<Http://www.chinaroby.com>

Email : info@chinaroby.com